

Flock Together

Featuring *All Stars* by Tula Pink

Beautiful fabric feathers radiate from the center to form a colorful medallion. Stripes and dots add to the fun!

Collection:	All Stars by Tula Pink
Technique:	Piecing
Skill Level:	Intermediate
Crafting Time:	Weekend*
Finished Size:	40" x 40" (101.60cm x 101.60cm)

*Crafting time based on Intermediate skill level



Project designed by Stacey Day
 Tech edited by Linda Turner Griepentrog

Fabric Requirements

DESIGN	COLOR	ARTICLE CODE	YARDAGE
(A) Designer Essentials Solids	Arctic White	CSFSESS.ARWHT	2¼ yards (2.06m)
(B) Tent Stripe	Peony	PWTP069.PEONY	¾ yard (34.29cm)

Jelly Roll Swatches on page 3

Backing (Purchased Separately)

44" (111.76cm) Pom Poms	Marigold	PWTP118.MARIG	2⅔ yards (2.49m)
OR 108" (274.32cm)			1½ yards (1.22m)

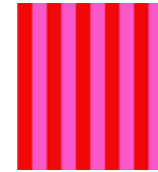
Additional Requirements

- Coats Dual Duty XP® All-purpose thread
- 48" x 48" (121.92cm x 121.92cm) batting
- Templates 1-9
- Sewing machine
- Rotary cutter/mat/ruler
- Basic sewing and pressing supplies
- Fabric glue
- Foundation paper (optional)*

*If you prefer to print out Template 2 on foundation piecing paper, you will need (10) pieces. Then glue the two template sections together before starting the piecing process.



(A)



(B)



Backing
44"
(111.76cm)

JELLY ROLL CONTENTS USED IN QUILT:

Designer Essentials Solids				Tent Stripe		Pom Poms	
Agean CSFSESS.AGEAN	Cricket CSFSESS.CRICK	Iris CSFSESS.IRISX	Persimmon CSFSESS.PERSI	Agave PWTP069.AGAVE	Marigold PWTP069.MARIG	Agave PWTP118.AGAVE	Marigold PWTP118.MARIG
Cajun CSFSESS.CAJUN	Diva CSFSESS.DIVAX	Julep CSFSESS.JULEP	Putty CSFSESS.PUTTY	Begonia PWTP069.BEGON	Myrtle PWTP069.MYRTL	Begonia PWTP118.BEGON	Orchid PWTP118.ORCHI
Cerulean CSFSESS.CERUL	Freesia CSFSESS.FREES	Limeade CSFSESS.LIMEA	Sapphire CSFSESS.SAPPH	Foxglove PWTP069.FOXGL	Orchid PWTP069.ORCHI	Foxglove PWTP118.FOXGL	Peony PWTP118.PEONY
Cornflower CSFSESS.CORNF	Glacier CSFSESS.GLACI	Mojito CSFSESS.MOJIT	Seabreeze CSFSESS.SEABR	Iris PWTP069.IRISX	Peony PWTP069.PEONY	Iris PWTP118.IRISX	Myrtle PWTP118.MYRTL
Cosmo CSFSESS.COSMO	Hibiscus CSFSESS.HIBIS	Pear CSFSESS.PEARX	Sweet Pea CSFSESS.SWEET	Lupine PWTP069.LUPIN	Poppy PWTP069.POPPY	Lupine PWTP118.LUPIN	Poppy PWTP118.POPPY
	Taffy CSFSESS.TAFFY	Tula CSFSESS.TULAP					



Preparation

Templates on page 7-13

Glue or tape together the templates as noted and cut out of paper.

Cutting

WOF = Width of Fabric

Templates 3 and 7 are cut from a double layer of fabric to yield a right and left of each. Templates 1, 4, 5, 6, 8, and 9 are cut from a single layer right side up.

Fabric A, cut:

- (20) Template 3--(10) right and (10) left
- (10) Template 5
- (10) Template 6
- (20) Template 7--(10) right and (10) left
- (1) Template 8
- (4) Template 9

Fabric B, cut:

Enough 2 1/2" (6.35cm) bias strips to make at least 170" (4.32m) of finished binding

Jelly Roll, cut:

Separate the jelly roll strips into three groups: solids, stripes, and dots, using the fabrics shown. Note: You'll have some leftover strips for another project.

From the following stripes, cut (1) Template 1: Agave, Begonia, Foxglove, Iris, Lupine, Marigold, Myrtle, Orchid, Peony, and Poppy.

From the following dots, cut (3) 2 1/2" x 4" (6.35cm x 10.16cm): Agave, Begonia, Foxglove, Iris, Lupine, Marigold, Myrtle, Orchid, Peony, and Poppy.

From each of the Diva and Sapphire solids, cut (5) Template 4.

From each of the remaining solids shown, cut (4) 2 1/2" x 4" (6.35cm x 10.16cm).

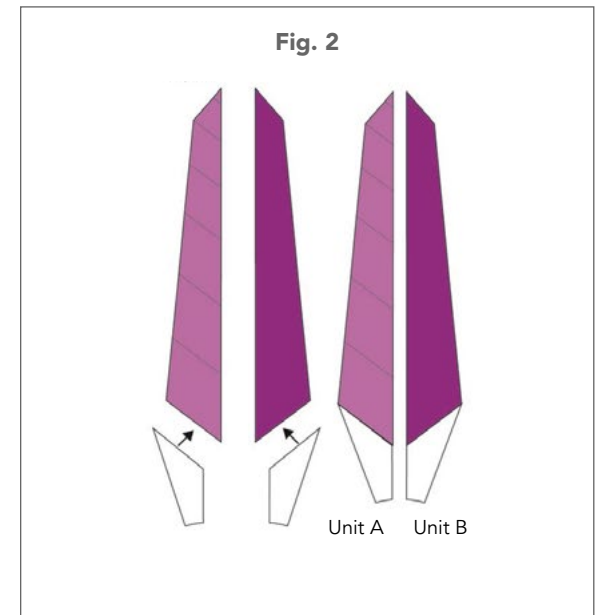
Sewing

All seam allowances are 1/4" (.64cm) and pieces are sewn right sides together. Press all seams as indicated. This pattern assumes a basic knowledge of paper piecing.

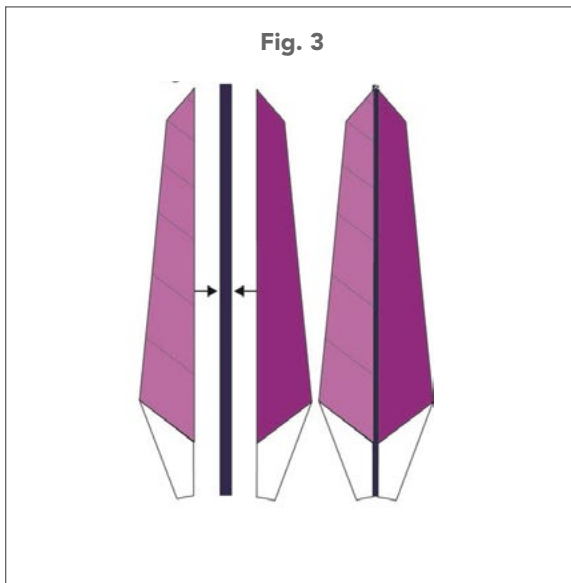
1. Using Template 2, paper piece the (3) 2 1/2" x 4" (6.35cm x 10.16cm) dot rectangles together randomly with (4) 2 1/2" x 4" (6.35cm x 10.16cm) coordinating solids. Paper piece (1) Template 2 for each dot fabric, (10) total. Trim around the outside line of each (**Fig. 1**). Carefully remove the paper from each piece.



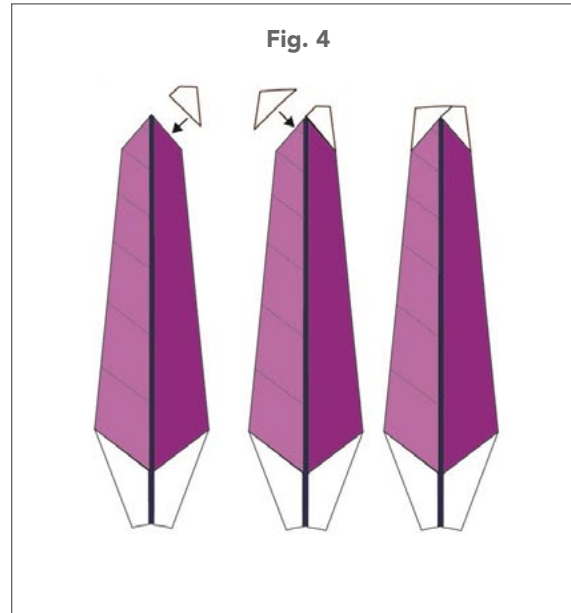
2. Sew the **Fabric A** Template 3 Left pieces to the bottom of the Template 2 pieces to make (10) A Units. Press.
3. Sew the **Fabric A** Template 3 Right pieces to the bottom of the Template 1 pieces to make (10) B Units (**Fig. 2**). Press.



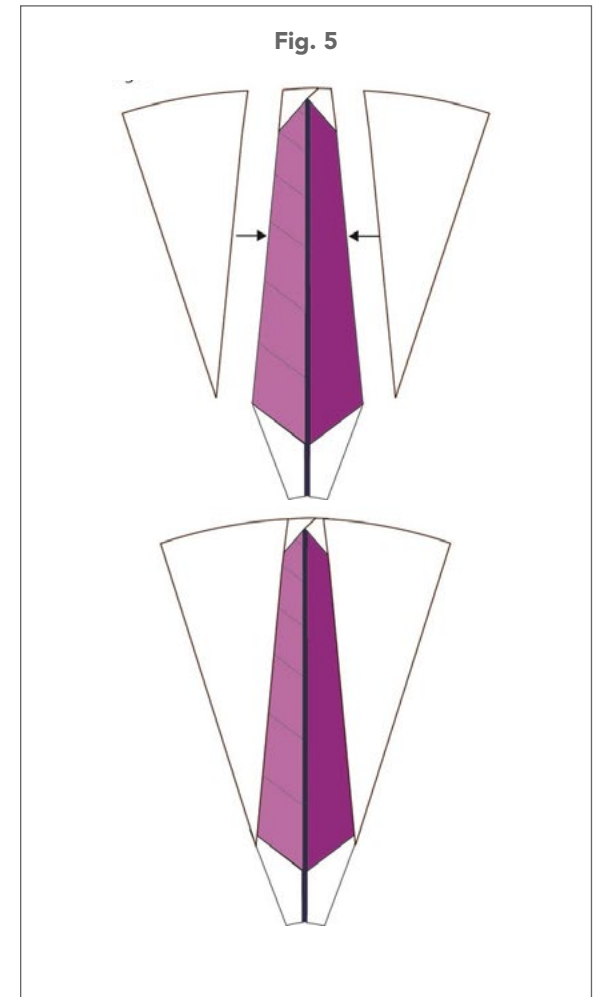
4. Sew a Diva Template 4 piece to the Agave, Foxglove, Marigold, Orchid, and Peony A units. Press seam allowances toward Template 4, then sew a B Unit to the other side, matching the color of the dot to the stripe. Press toward Template 4. Trim the top of Template 4 in line with the angle of the A and B units. Repeat with the Sapphire Template 4 pieces and the Begonia, Iris, Myrtle, Lupine, and Poppy. (Fig. 3)



5. Sew Template 6 to the top of the B Units. Press, then sew Template 5 to the top of the A Units (Fig. 4). Press.



6. Sew Template 7 Left pieces to the A Unit side. Press, then sew the Template 7 Right pieces to the Unit B side (Fig. 5). Press to make (10) wedges.



Quilt Top Assembly

Follow the **Quilt Layout** diagram during the assembly process.

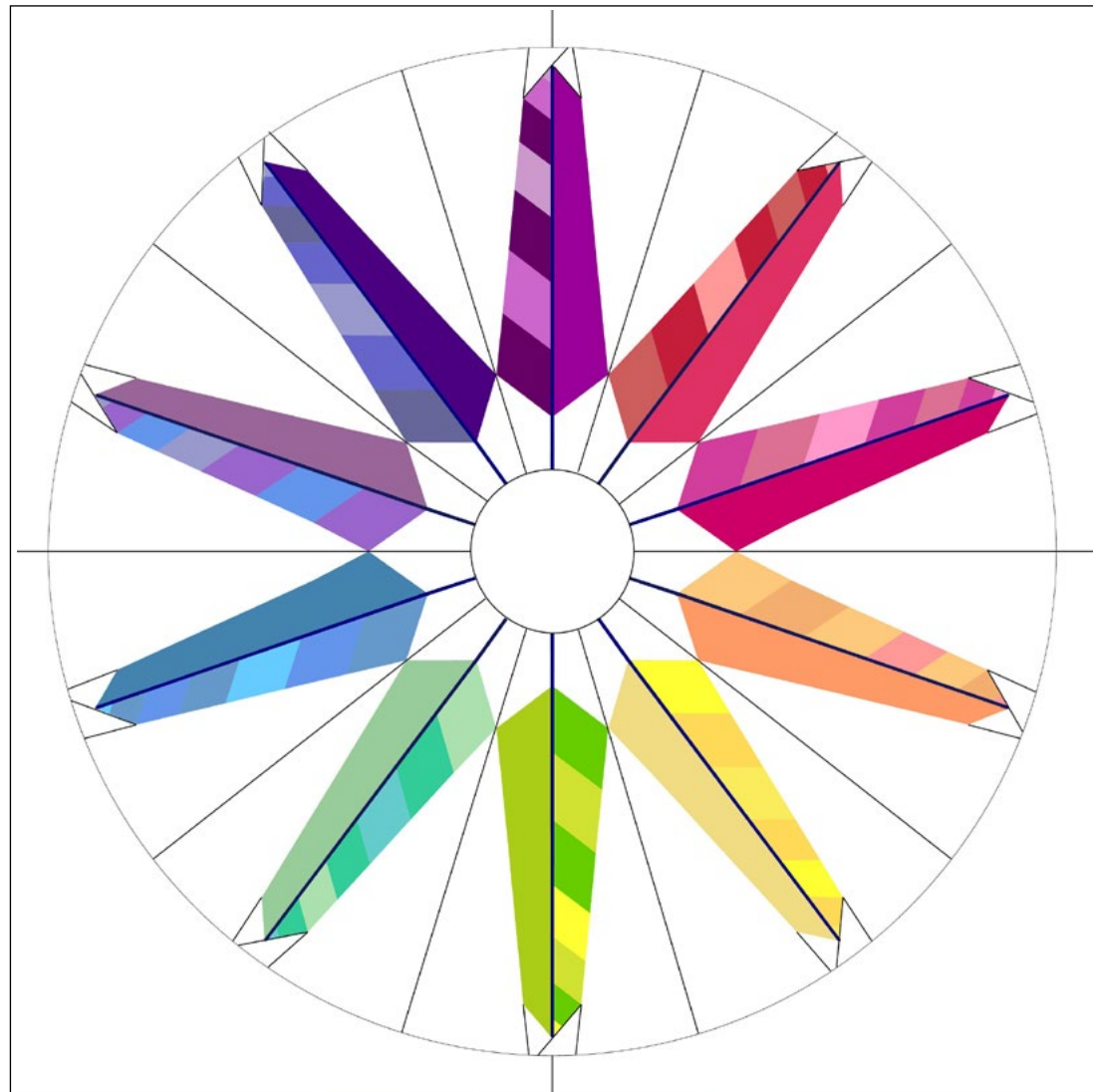
7. Sew the wedges together in the color order shown to make the quilt center—(clockwise from the top) Foxglove, Poppy, Peony, Begonia, Marigold, Myrtle, Agave, Lupine, Orchid, and Iris. Fold the quilt center in half twice and finger-press the fold to find the vertical and horizontal center.
8. Fold the Template 8 piece in half twice and finger-press. Matching the center points, sew the quilt center to outer wedges. Press.
9. Sew the Template 9 pieces together to make the background. Sew the background to the quilt center, matching the seams of the background to the pressed centers of the quilt medallion. Press.

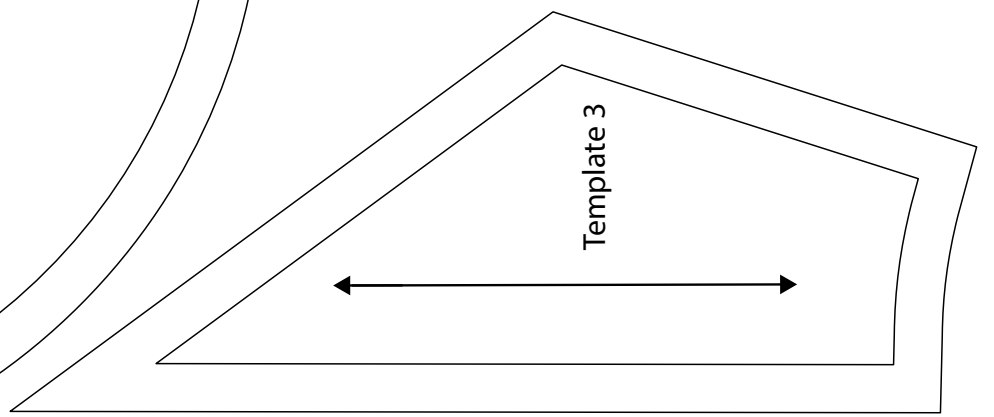
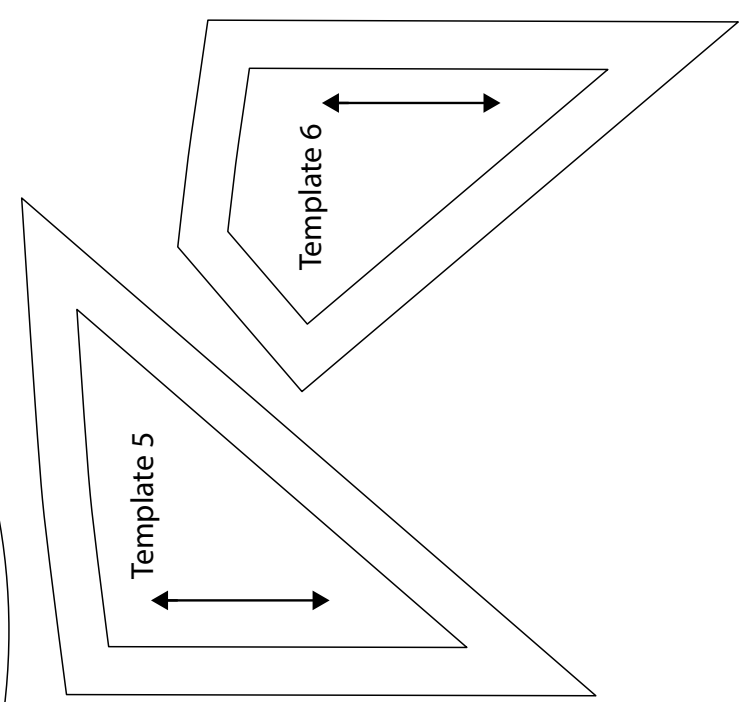
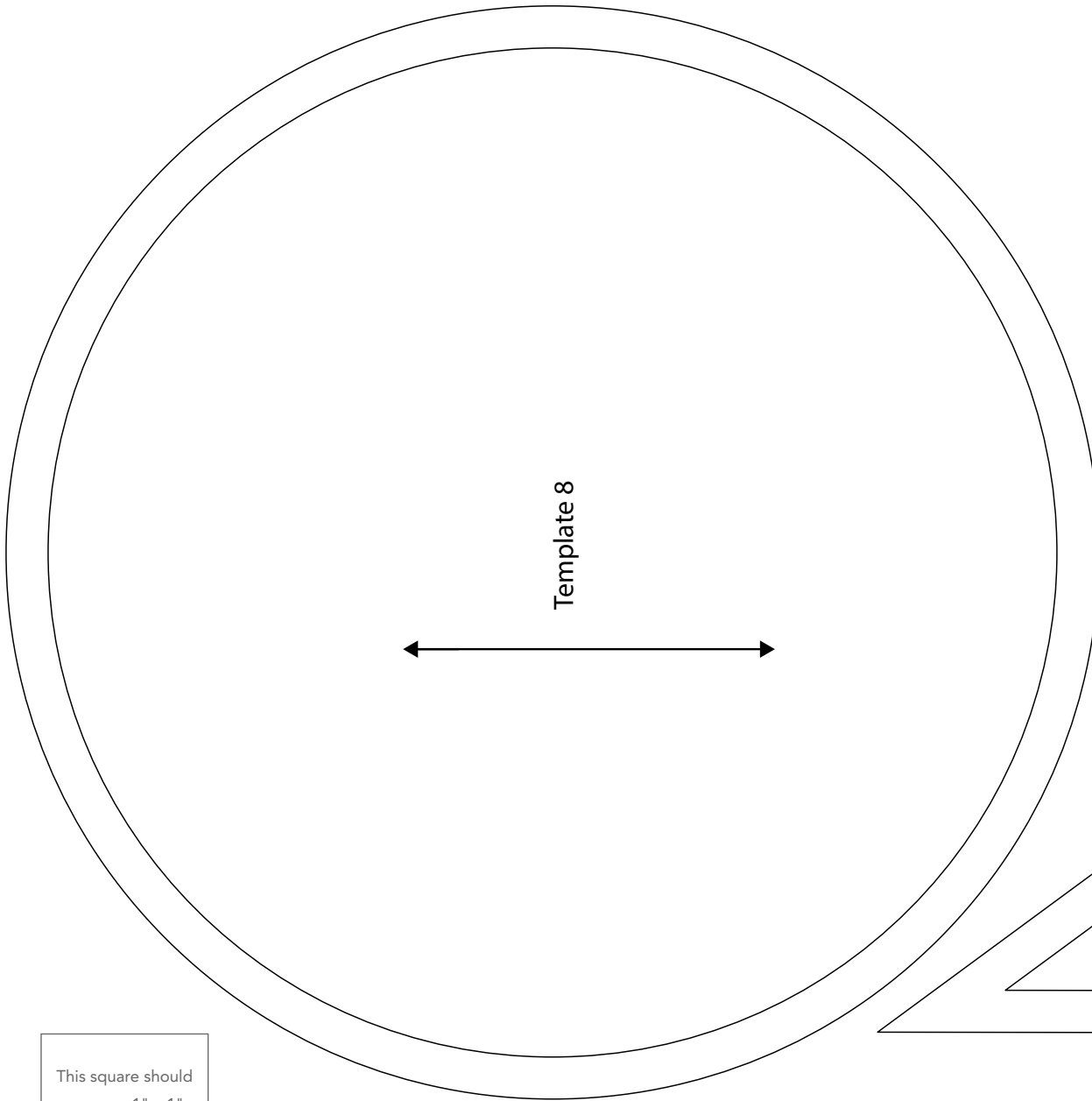
Finishing

10. Sew together the 2½" (6.35cm) **Fabric B** bias strips end to end using diagonal seams. Press the seams open. Press the binding strip in half wrong sides together.
11. Layer the backing (wrong side up), batting, and quilt top (right side up). Baste the layers together and quilt as desired. Trim excess batting and backing even with the top after quilting is completed.
12. Leaving an 8" (20.32cm) tail of binding, sew binding to top of quilt through all layers matching all raw edges. Miter corners. Stop approximately 12" (30.48cm) from where you started. Lay both loose ends of binding flat along quilt edge. Where these two loose ends meet, fold them back on themselves and press to form a crease. Using this crease as your stitching line, sew the two open ends of the binding together right sides together. Trim seam to ¼" (.64cm) and press open. Finish sewing binding to quilt.

13. Turn the binding to the back of quilt and hand-stitch in place.

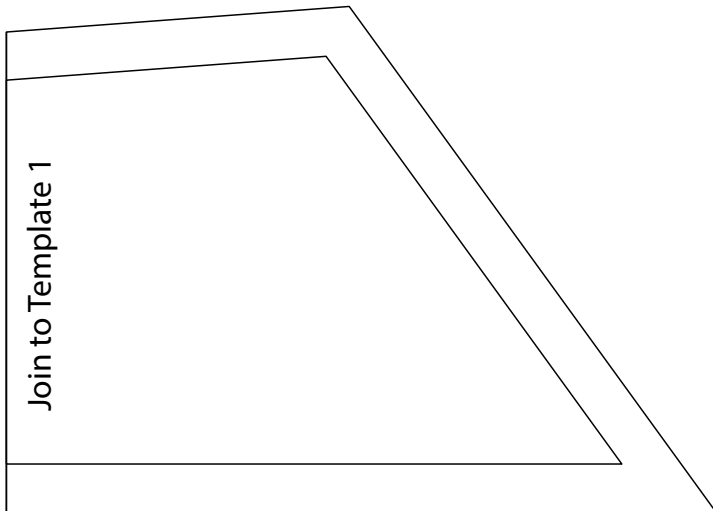
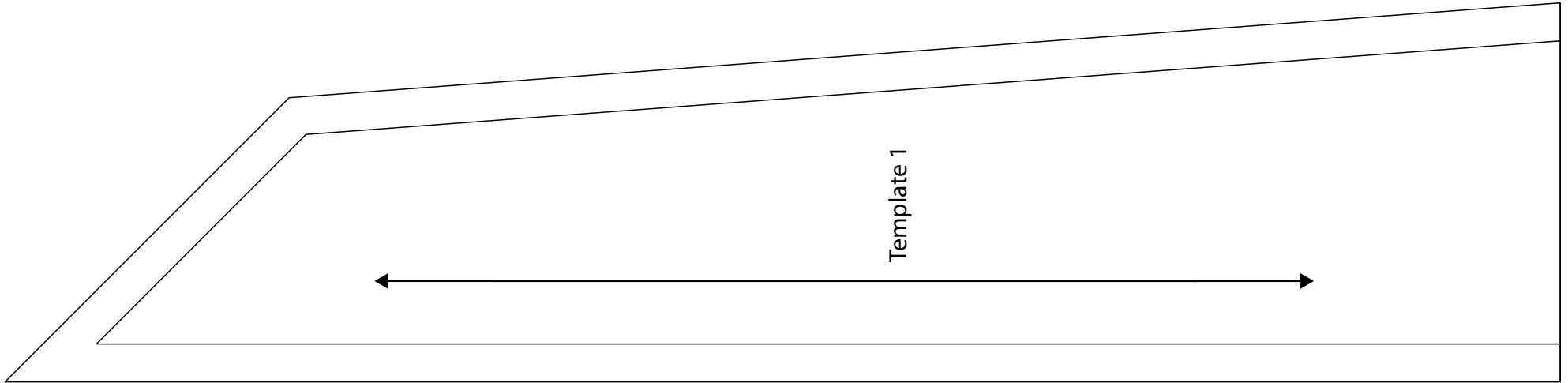
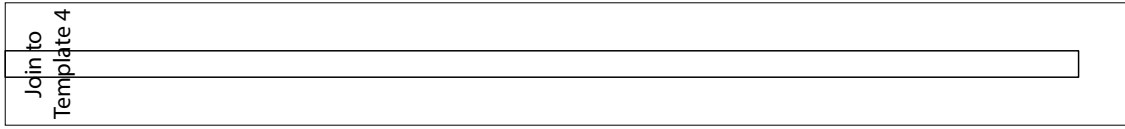
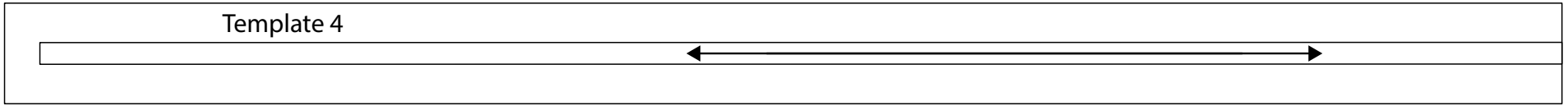
Quilt Layout





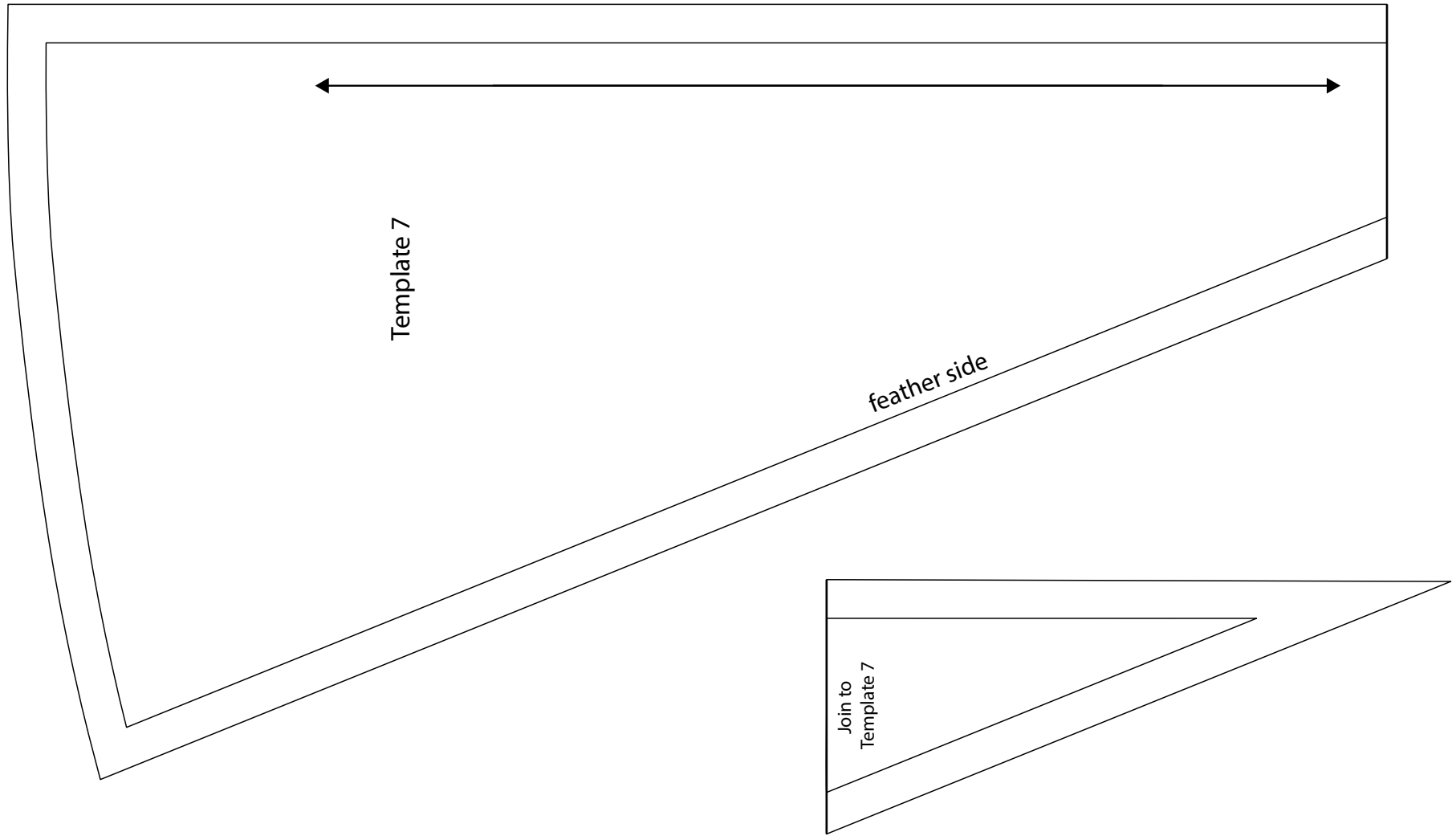
This square should
measure 1" x 1"
(2.54cm x 2.54cm)
when printed.

***** Measure templates before cutting to confirm printing at 100%*****



This square should
measure 1" x 1"
(2.54cm x 2.54cm)
when printed.

***** Measure templates before cutting to confirm printing at 100%*****



This square should
measure 1" x 1"
(2.54cm x 2.54cm)
when printed.

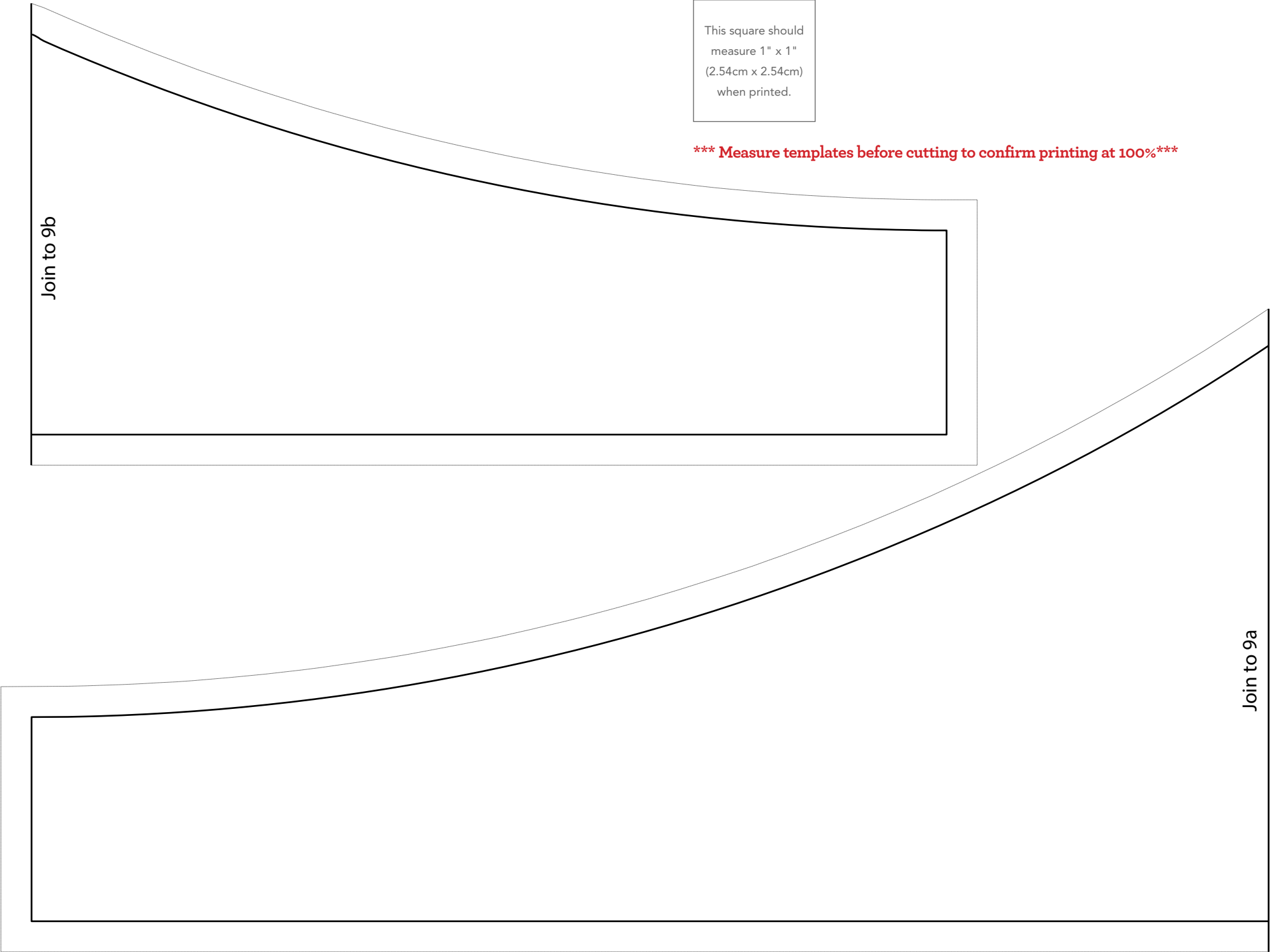
***** Measure templates before cutting to confirm printing at 100%*****

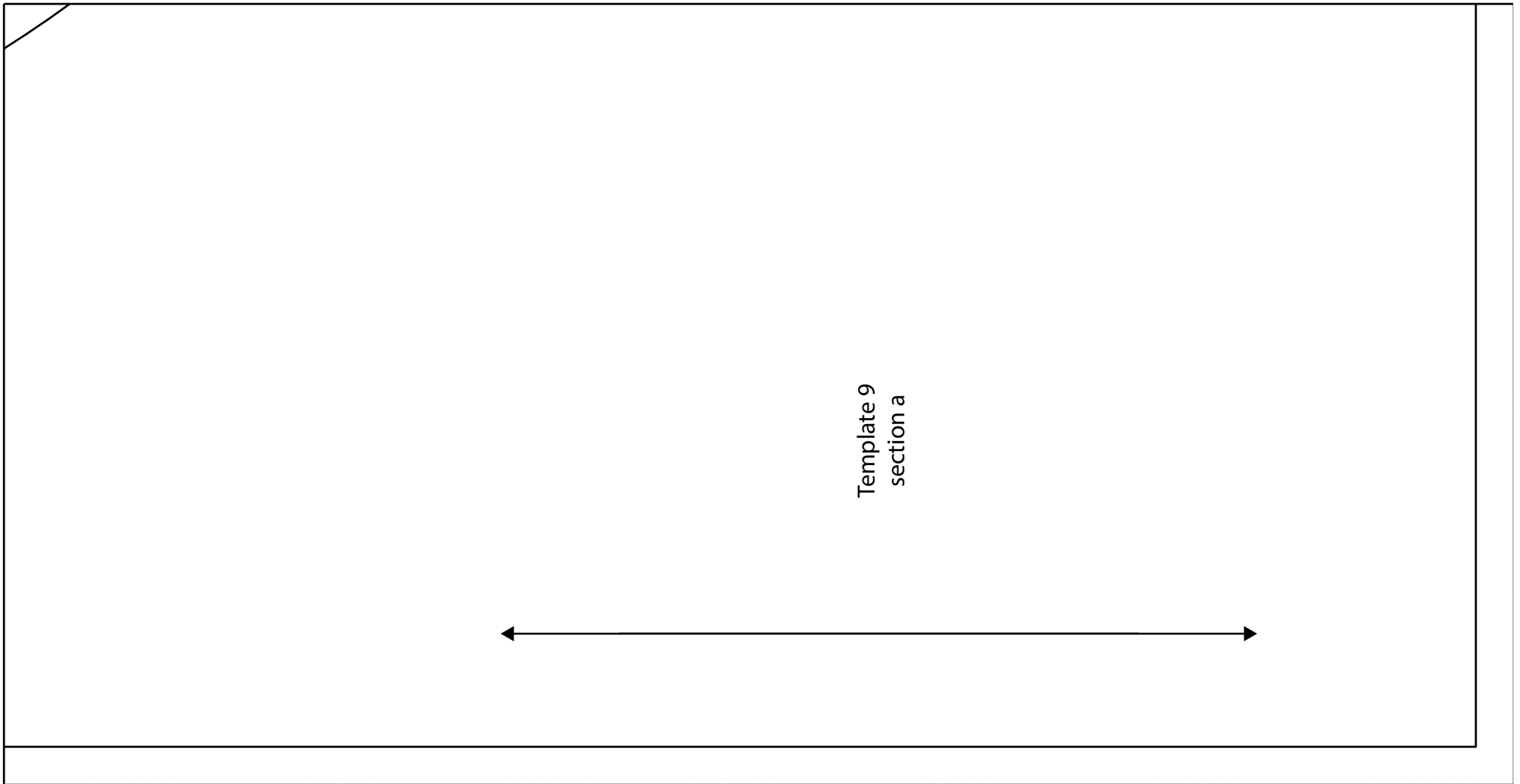
This square should
measure 1" x 1"
(2.54cm x 2.54cm)
when printed.

***** Measure templates before cutting to confirm printing at 100%*****

Join to 9b

Join to 9a





Template 9
section a

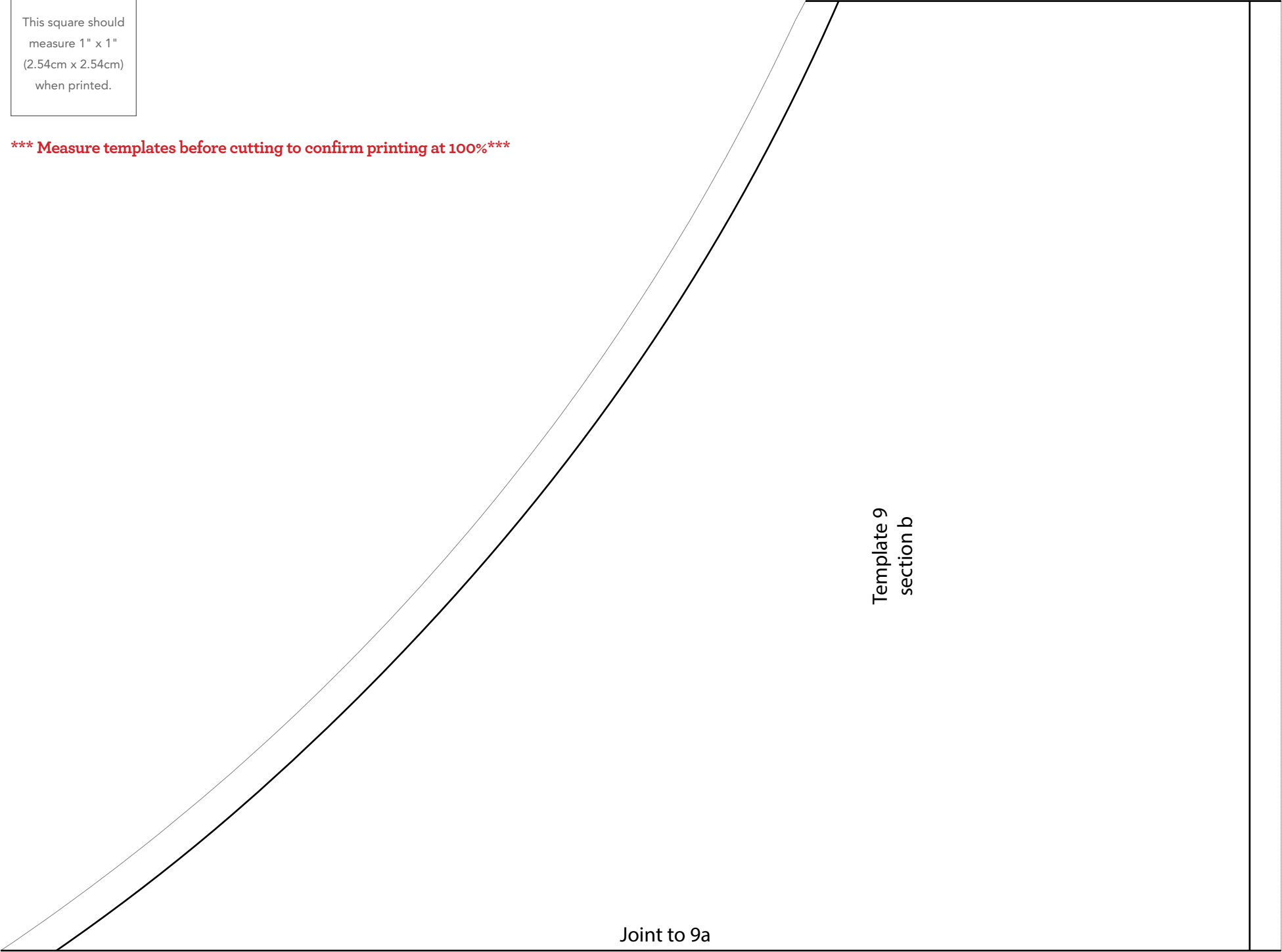


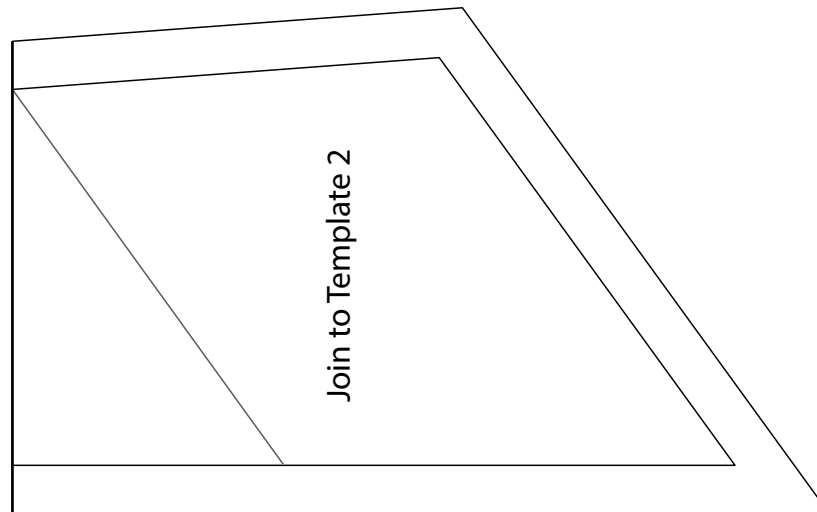
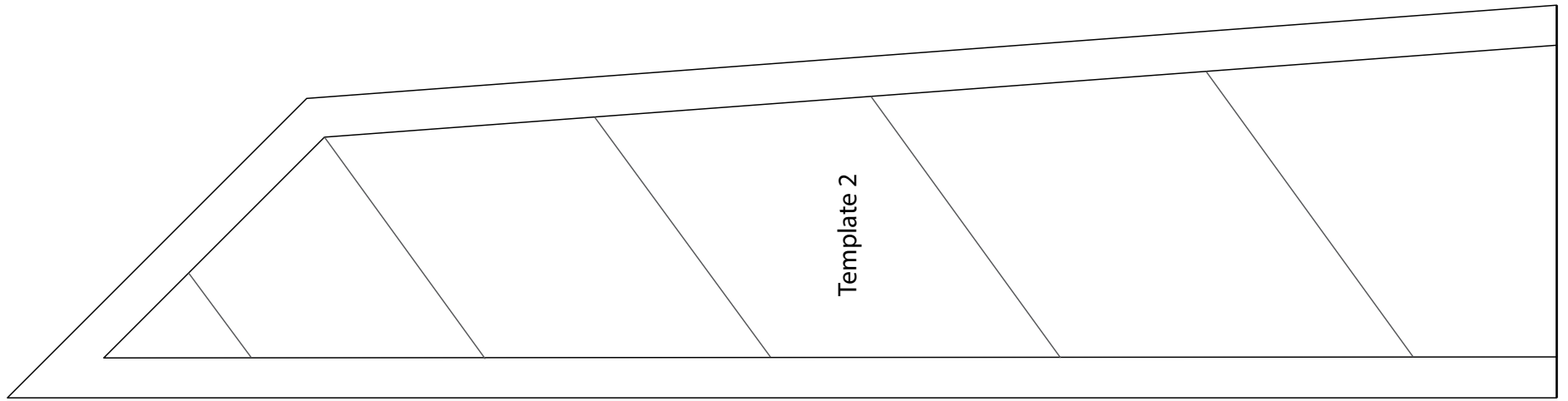
This square should
measure 1" x 1"
(2.54cm x 2.54cm)
when printed.

***** Measure templates before cutting to confirm printing at 100%*****

This square should
measure 1" x 1"
(2.54cm x 2.54cm)
when printed.

***** Measure templates before cutting to confirm printing at 100%*****





This square should
measure 1" x 1"
(2.54cm x 2.54cm)
when printed.

***** Measure templates before cutting to confirm printing at 100%*****